

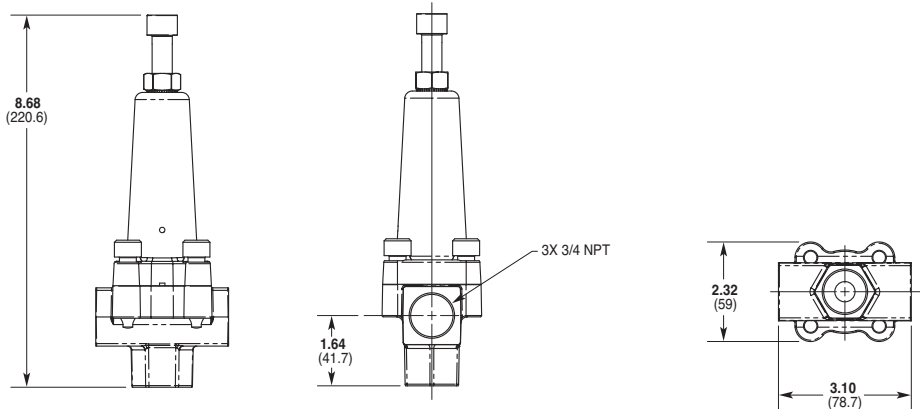
C60 Series Valves

Dimensions

C62 with 3/4" NPT Ports Inches (mm)

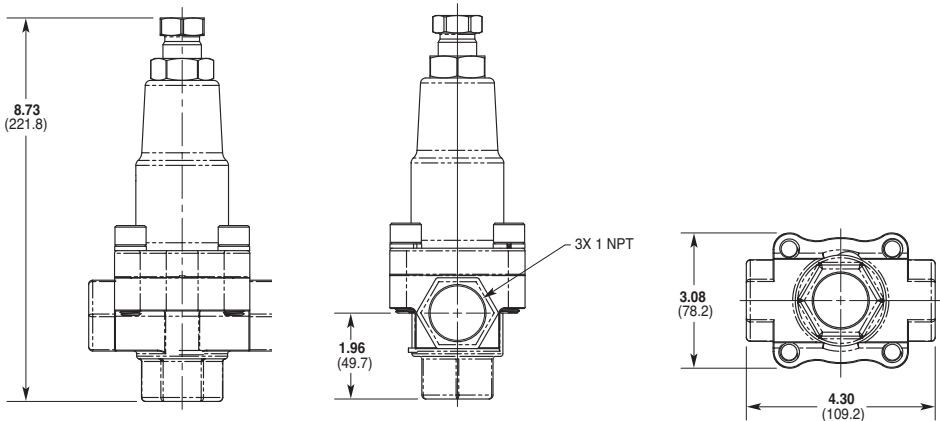


C62 valve with Stainless Steel body



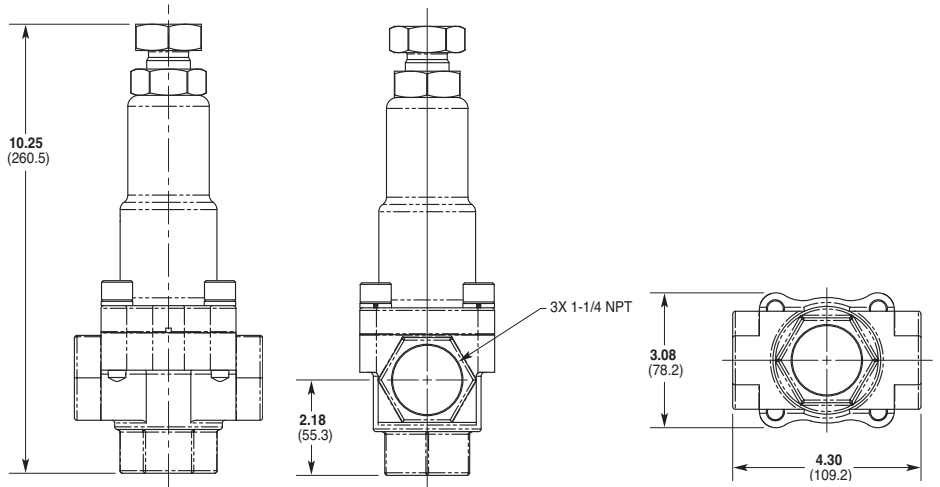
C63 valve with Brass body

C63 with 1" NPT Ports Inches (mm)



C64 valve with Stainless Steel body

C64 with 1-1/4" NPT Ports Inches (mm)



C60 Series Valves How to Order

Ordering Information

1	2	3	4	5	6	7	8	9	10	11
---	---	---	---	---	---	---	---	---	----	----

A complete C62, C63 or C64 Model Number contains 11 digits of customer-specified design options, for example: C62ABBVSEF.

Digit	Order Code	Description
1-3	C62	Valve Configuration & Capacities 1-14 gpm (3-53.0 l/min) NPT Ports
	C63	1-25 gpm (3-94.6 l/min) NPT Ports
	C64	1-40 gpm (3-151.4 l/min) NPT Ports
4	A	Inlet/Outlet Ports NPT Threaded Ports
5	A	Pressure Range (Spring Selection) C62: 75-500 psi (5-34 bar) C63: 75-1000 psi (5-69 bar) C64: 75-1000 psi (5-69 bar)
	B	C62: 500-2500 psi (34-172 bar) C63: 1000-2500 psi (69-172 bar) C64: 1000-2500 psi (69-172 bar)
6	B	Body/Top Material Brass/Plated Steel
	H	Hastelloy C/Plated Steel
	S	316L Stainless Steel/Plated Steel
7	J	O-rings/Diaphragm PTFE/PTFE
	V	FKM/PTFE
8	H	Valve Seats Hastelloy C
	R	316L Stainless Steel
	S	17-4 Stainless Steel
	T	Tungsten Carbide
9	H	Plungers Hastelloy C
	R	316L Stainless Steel
	S	17-4 Stainless Steel
	T	Tungsten Carbide
10	E	Seat Size For C62 Models
	J	For C63 Models
	N	For C64 Models
11	F	Port Size For C62 Models (3/4")
	G	For C63 Models (1")
	H	For C64 Models (1-1/4")

Notes:

C62 valves fitted with Tungsten Carbide rated to 1800 psi (124 bar) maximum.

Hastelloy C Body and Tungsten Carbide Plunger/Seat options available only for C62 models.

Ratings and Specifications

Flow Capacity Model	Maximum		Minimum	
	gpm	l/min	gpm	l/min
C62	14.0	53.0	1.0	3.8
C63	25.0	94.6	1.0	3.8
C64	40.0	151.4	1.0	3.8

Pressure Range		Model Configuration	
		AA	AB
C62	psi	75-500	500-2500
	bar	5-34	34-172
C63	psi	75-1000	1000-2500
	bar	5-69	69-172
C64	psi	75-1000	1000-2500
	bar	5-69	69-172

Max. Temperature	200 °F (93 °C)
-------------------------	----------------

Inlet & Outlet Ports	
C62	3/4" NPT
C63	1" NPT
C64	1-1/4" NPT

Weight	
C62	4.0 lbs. (1.8 kg)
C63	6.2 lbs. (2.8 kg)
C64	7.2 lbs. (3.3 kg)

C62 valves are recommended for Hydra-Cell models D04, D10, D12, and D15/D17.

C63 valves are recommended for Hydra-Cell model H25.

C64 valves are recommended for Hydra-Cell model D35.

[Click Here](#)
For Your Free Quote